

Energy Resources of Australia

Merrill Lynch Conference – 11 May 2010

Rob Atkinson - Chief Executive



Cautionary statement

This presentation has been prepared by Energy Resources of Australia Ltd (“ERA”) and consisting of the slides for a presentation concerning ERA. By reviewing/attending this presentation you agree to be bound by the following conditions.

Forward-looking statements

This presentation includes forward-looking statements. All statements other than statements of historical facts included in this presentation, including, without limitation, those regarding ERA’s financial position, business strategy, plans and objectives of management for future operations (including development plans and objectives relating to ERA’s products, production forecasts and reserve and resource positions), are forward-looking statements. Such forward-looking statements involve known and unknown risks, uncertainties and other factors which may cause the actual results, performance or achievements of ERA, or industry results, to be materially different from any future results, performance or achievements expressed or implied by such forward-looking statements.

Such forward-looking statements are based on numerous assumptions regarding ERA’s present and future business strategies and the environment in which ERA will operate in the future. Among the important factors that could cause ERA’s actual results, performance or achievements to differ materially from those in the forward-looking statements include, among others, levels of actual production during any period, levels of demand and market prices, the ability to produce and transport products profitably, the impact of foreign currency exchange rates on sales revenues, market prices and operating costs, operational problems, political uncertainty and economic conditions in relevant areas of the world, the actions of competitors, activities by governmental authorities such as changes in taxation or regulation and such other risk factors identified in ERA’s most recent Annual Report. Forward-looking statements should, therefore, be construed in light of such risk factors and undue reliance should not be placed on forward-looking statements. These forward-looking statements speak only as of the date of this presentation.

Nothing in this presentation should be interpreted to mean that future earnings per share of ERA will necessarily match or exceed its historical published earnings per share.

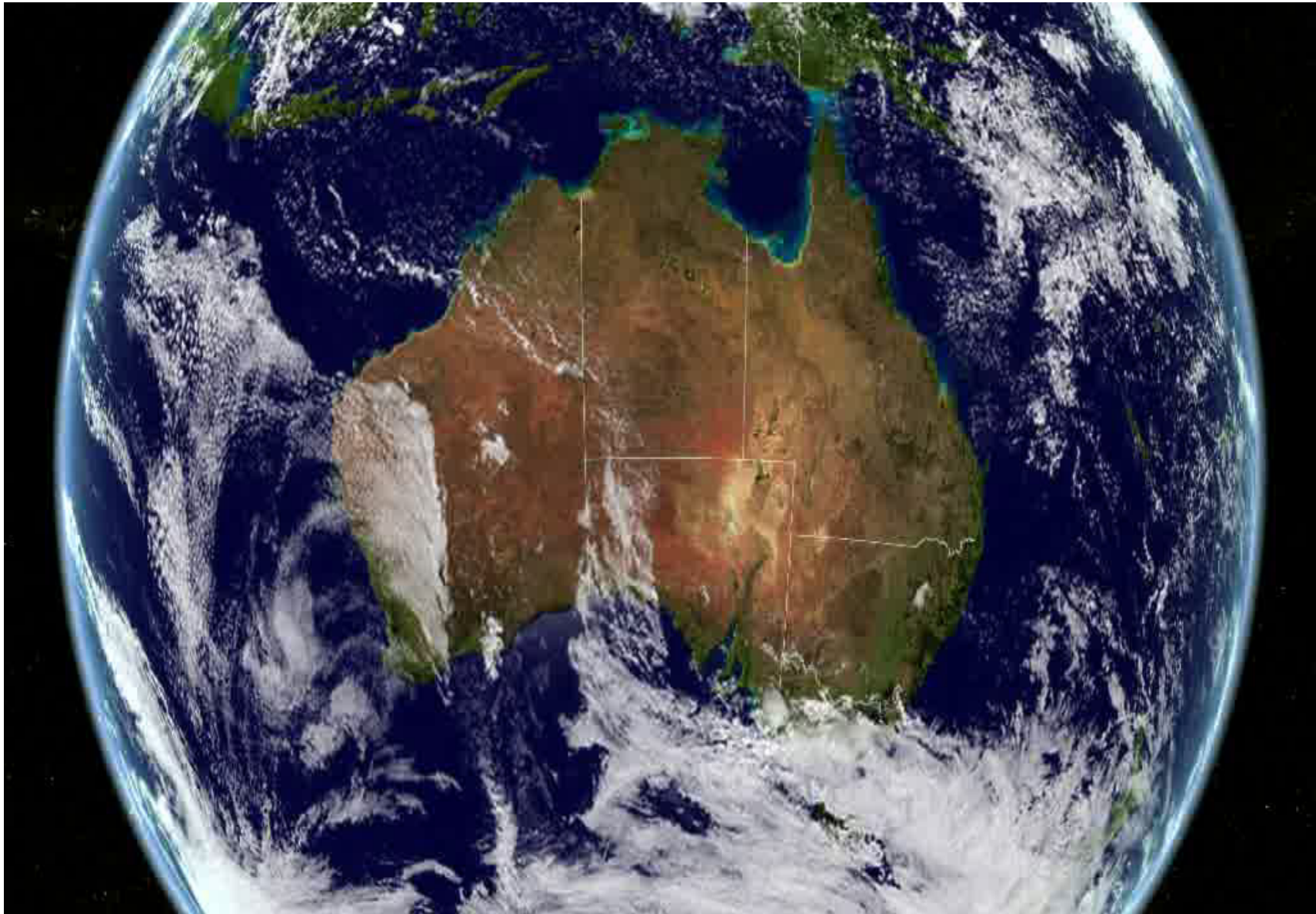


Acknowledge Traditional Owners

The mining operations of Energy Resources of Australia Ltd (ERA) are located on Aboriginal land and are surrounded by, but separate from, Kakadu National Park.

ERA respectfully acknowledges the Mirarr, Traditional Owners of the land on which the Ranger Mine is situated.





ERA overview – geographic region



Presentation overview

ERA's current operations and 2009 performance

The outlook for uranium

ERA's growth opportunities



Sustainable development

Nuclear power critical to reducing carbon emissions

ERA provides the fuel for 1 per cent of world electricity

Strong record of environment protection over 30 years

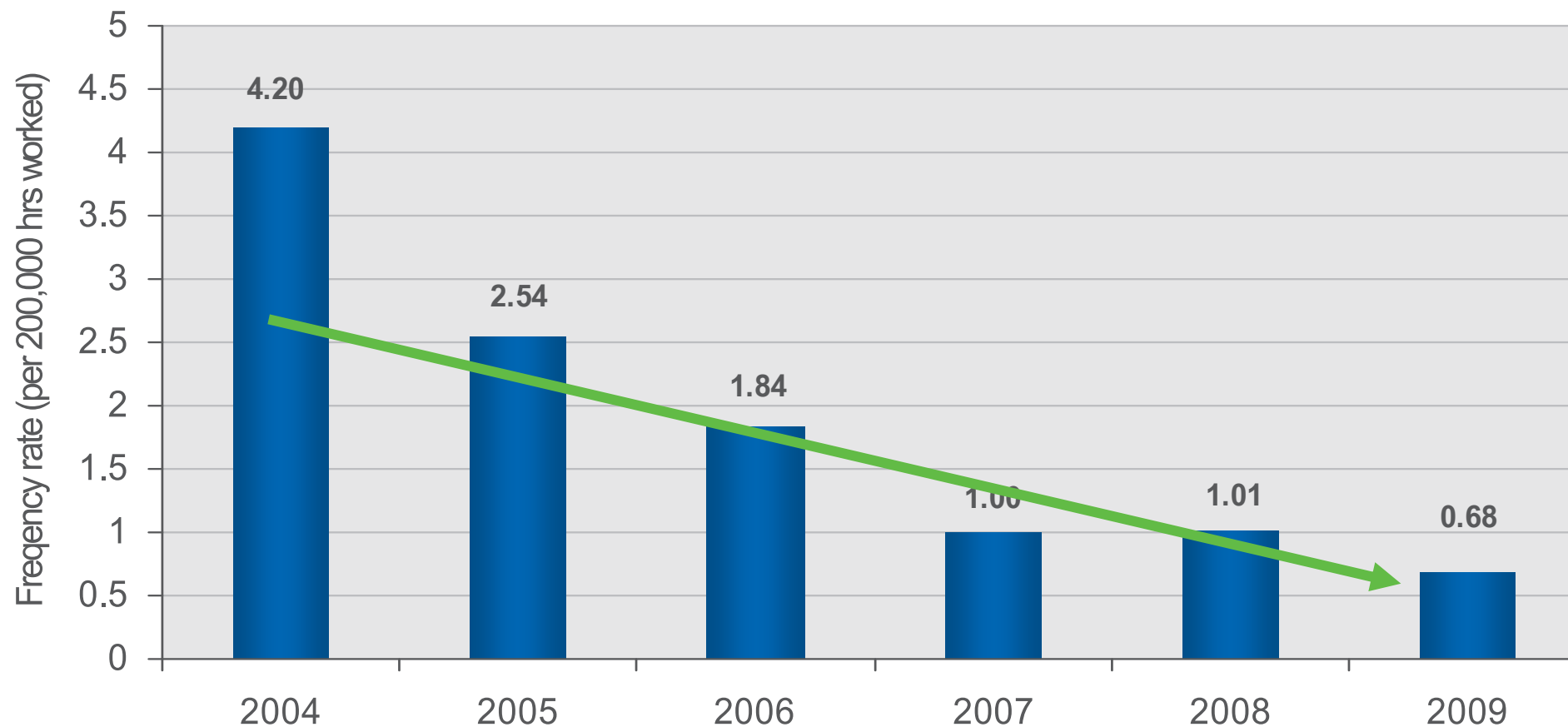
ERA makes a vital social and economic contribution to the local region

- Reached 20 per cent Indigenous employment in 2009
- ERA accounts for 2.8 per cent of the Northern Territory economy
- Royalties are a significant form of income for Indigenous organisations in the region



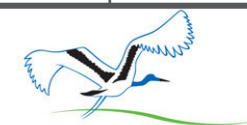
Safety

All Injury Frequency Rates

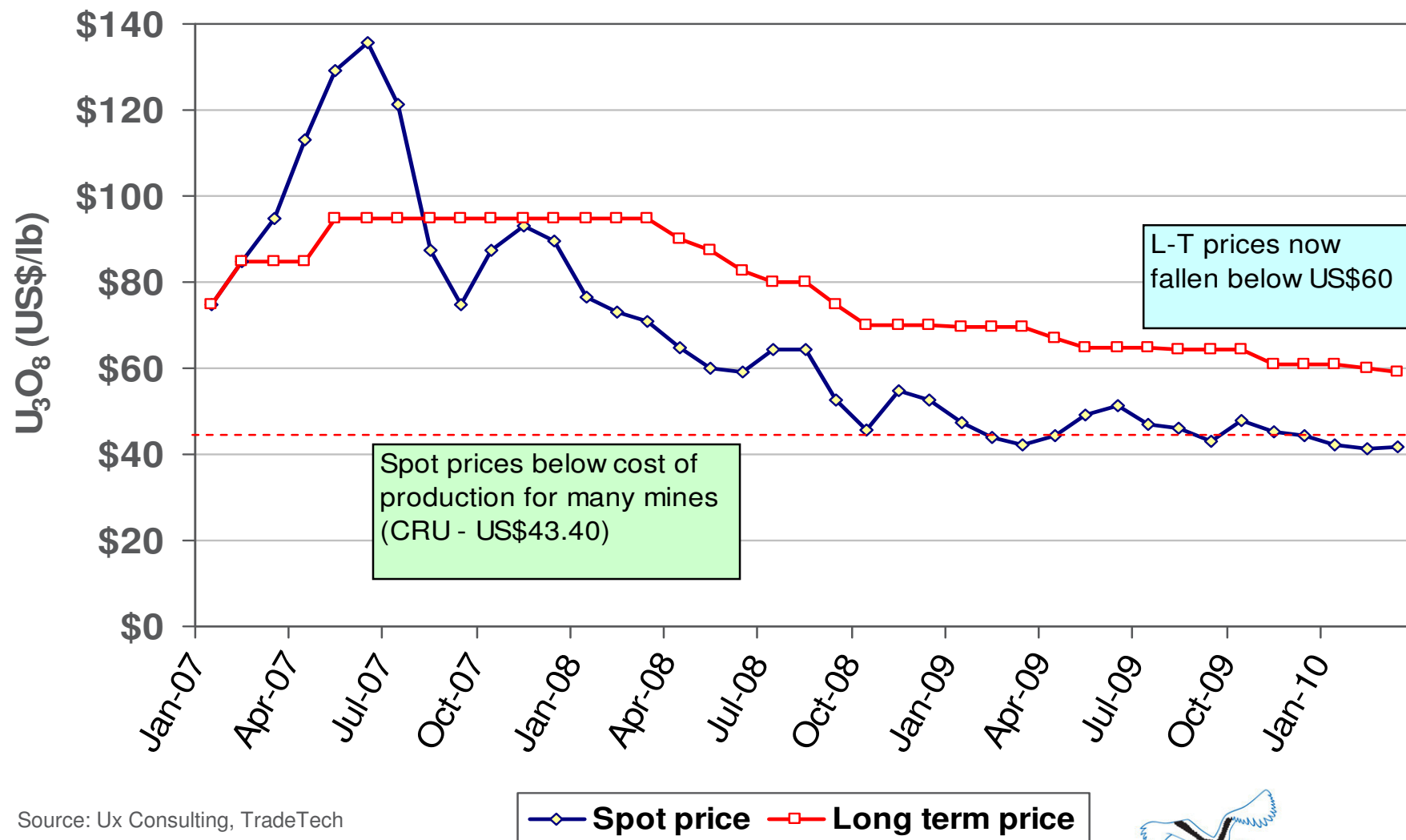


ERA financial overview

	2009	2008	Change
Net profit after tax - A\$ million	272.6	221.8	+ 23 %
Underlying earnings - A\$ million	272.6	119.0	+ 129 %
Income - A\$ million	780.6	691.8	+ 13 %
Revenue from sales of uranium oxide - A\$ million	767.8	495.6	+ 55 %
Net cash flow - A\$ million	146.8	89.0	+65 %
Capital expenditure - A\$ million	37.1	166.8	- 78 %
Sales volume (tonnes uranium oxide)	5,497	5,272	+ 4 %
Average realised price – US\$/lb	50.84	32.53	+ 56%
Total dividends for the year (cents per share)	39	28	+ 39 %



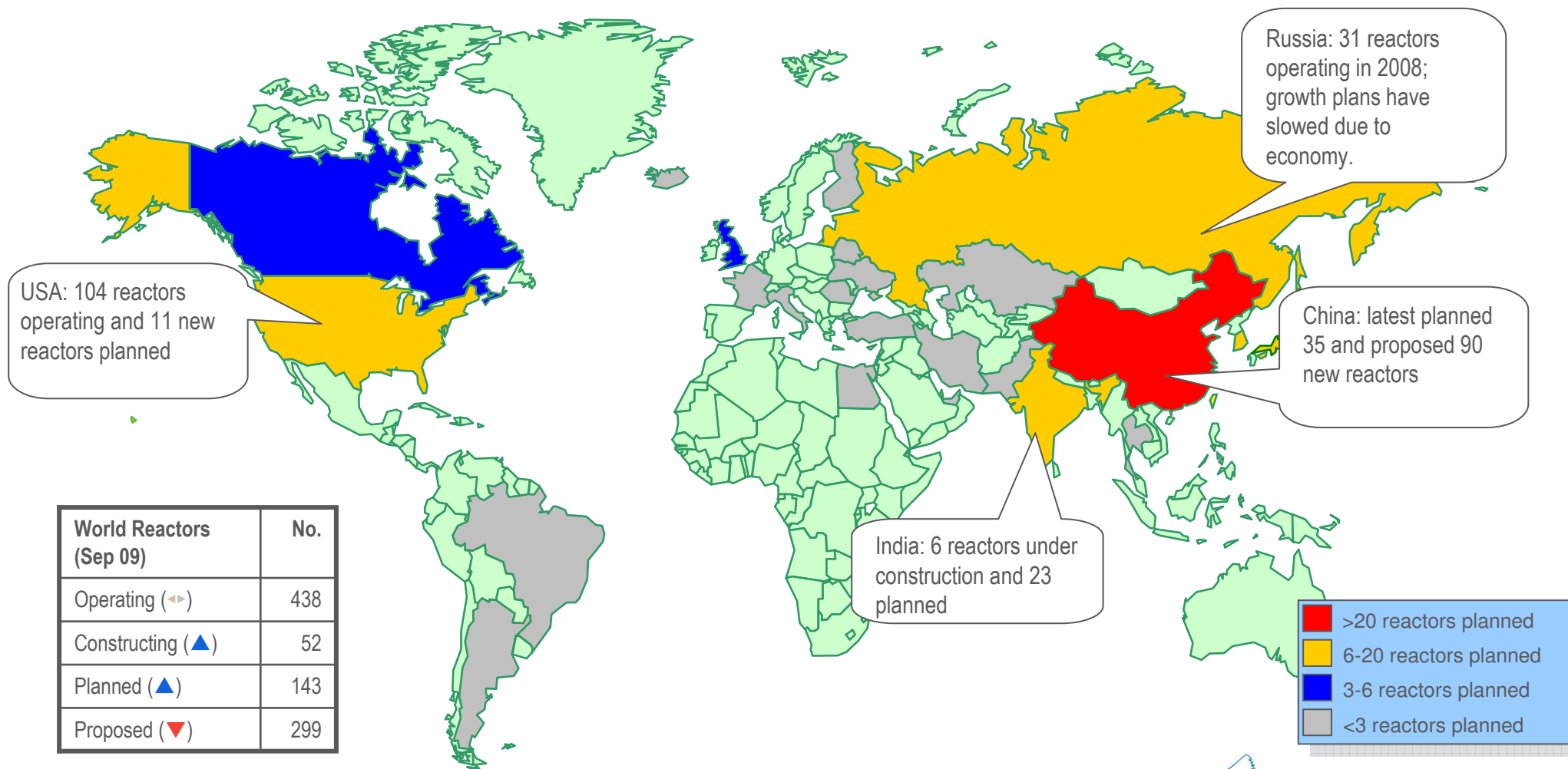
Prices have weakened, but long-term outlook remains positive



Source: Ux Consulting, TradeTech



Market – demand outlook is positive



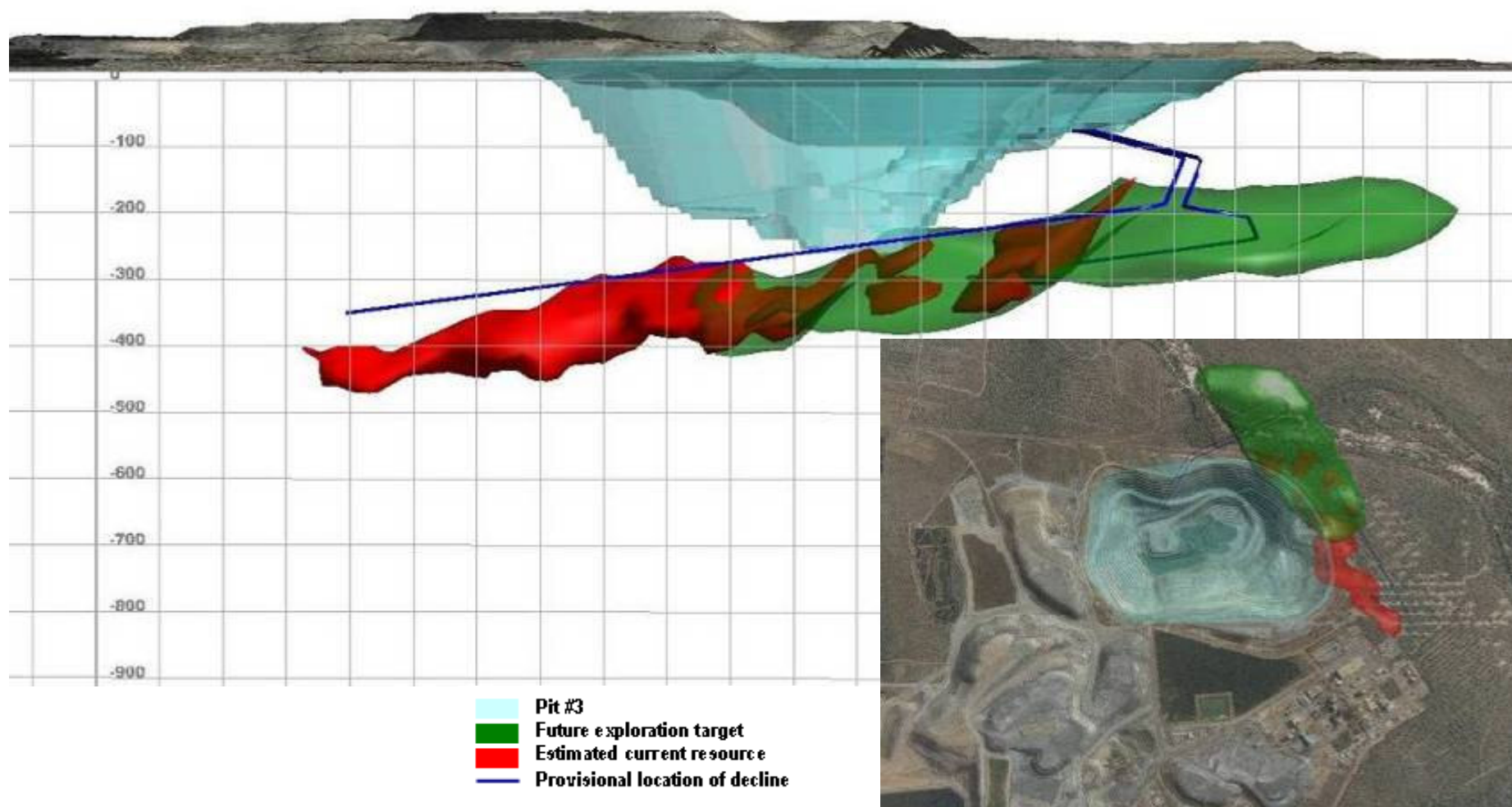
Source: WNA , January 2010

Heap Leach facility – potential layout and location

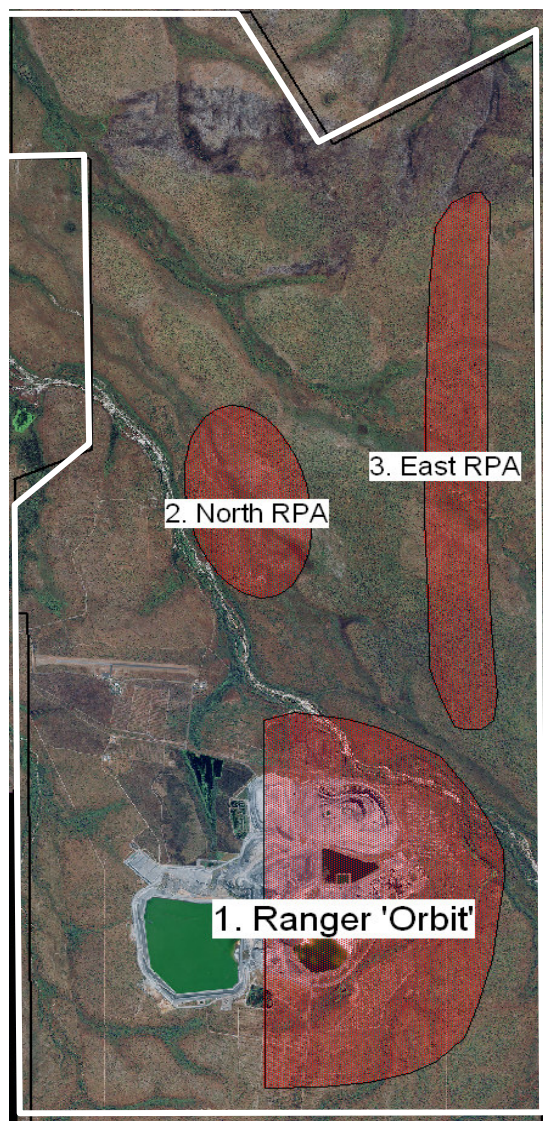


Ranger 3 Deeps

Perspective to west: One possible location of entrance to exploration decline
(provisional layout and decline design concept)



Exploration Projects - Priorities



1. Ranger Orbit

2. North RPA

3. East RPA



Summary

- Uranium market remains robust
- ERA has reliably supplied uranium oxide for 30 years
- Lease areas contain world class ore bodies
- Heap Leach project well advanced
- Other exciting development opportunities
 - Ranger 3 Deeps underground
 - Exploration potential
- Opportunities are adjacent to current infrastructure



www.energyres.com.au

