

# Energy Resources of Australia Ltd

Mining the Territory Conference  
Rob Atkinson – Chief Executive  
23 September 2010



# Forward-looking statements

This presentation has been prepared by Energy Resources of Australia Ltd ("ERA") and consisting of the slides for a presentation concerning ERA. By reviewing/attending this presentation you agree to be bound by the following conditions.

## Forward-looking statements

This presentation includes forward-looking statements. All statements other than statements of historical facts included in this presentation, including, without limitation, those regarding ERA's financial position, business strategy, plans and objectives of management for future operations (including development plans and objectives relating to ERA's products, production forecasts and reserve and resource positions), are forward-looking statements. Such forward-looking statements involve known and unknown risks, uncertainties and other factors which may cause the actual results, performance or achievements of ERA, or industry results, to be materially different from any future results, performance or achievements expressed or implied by such forward-looking statements.

Such forward-looking statements are based on numerous assumptions regarding ERA's present and future business strategies and the environment in which ERA will operate in the future. Among the important factors that could cause ERA's actual results, performance or achievements to differ materially from those in the forwardlooking statements include, among others, levels of actual production during any period, levels of demand and market prices, the ability to produce and transport products profitably, the impact of foreign currency exchange rates on sales revenues, market prices and operating costs, operational problems, political uncertainty and economic conditions in relevant areas of the world, the actions of competitors, activities by governmental authorities such as changes in taxation or regulation and such other risk factors identified in ERA's most recent Annual Report. Forward-looking statements should, therefore, be construed in light of such risk factors and undue reliance should not be placed on forward-looking statements. These forward-looking statements speak only as of the date of this presentation.

Nothing in this presentation should be interpreted to mean that future earnings per share of ERA will necessarily match or exceed its historical published earnings per share.

The information in this presentation relating to exploration results is based on information compiled by Greg Rogers, who is a member of the Australasian Institute of Mining and Metallurgy. Greg Rogers is a full-time employee of the company and he has sufficient experience which is relevant to the style of mineralisation and type of deposit under consideration and to the activity which he is undertaking to qualify as a Competent Person as defined in the 2004 Edition of the 'Australasian Code for Reporting of Exploration Results, Mineral Resources and Ore Reserves'. Greg Rogers consents to the inclusion in the report of the matters based on his information in the form and context in which it appears.



# Acknowledge Traditional Owners

The mining operations of Energy Resources of Australia Ltd (ERA) are located on Aboriginal land and are surrounded by, but separate from, Kakadu National Park.

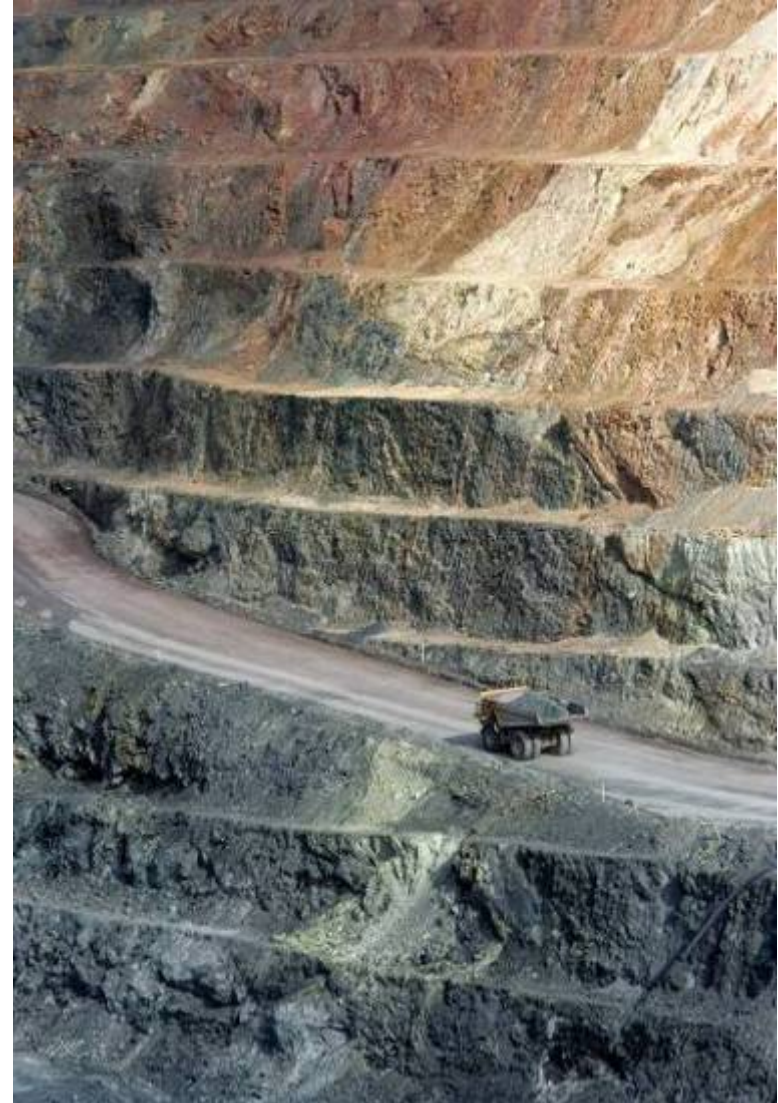
ERA respectfully acknowledges the Mirarr, Traditional Owners of the land on which the Ranger Mine is situated.

ERA would also like to acknowledge the traditional owners of the land in which we meet today – the Larrakia people.

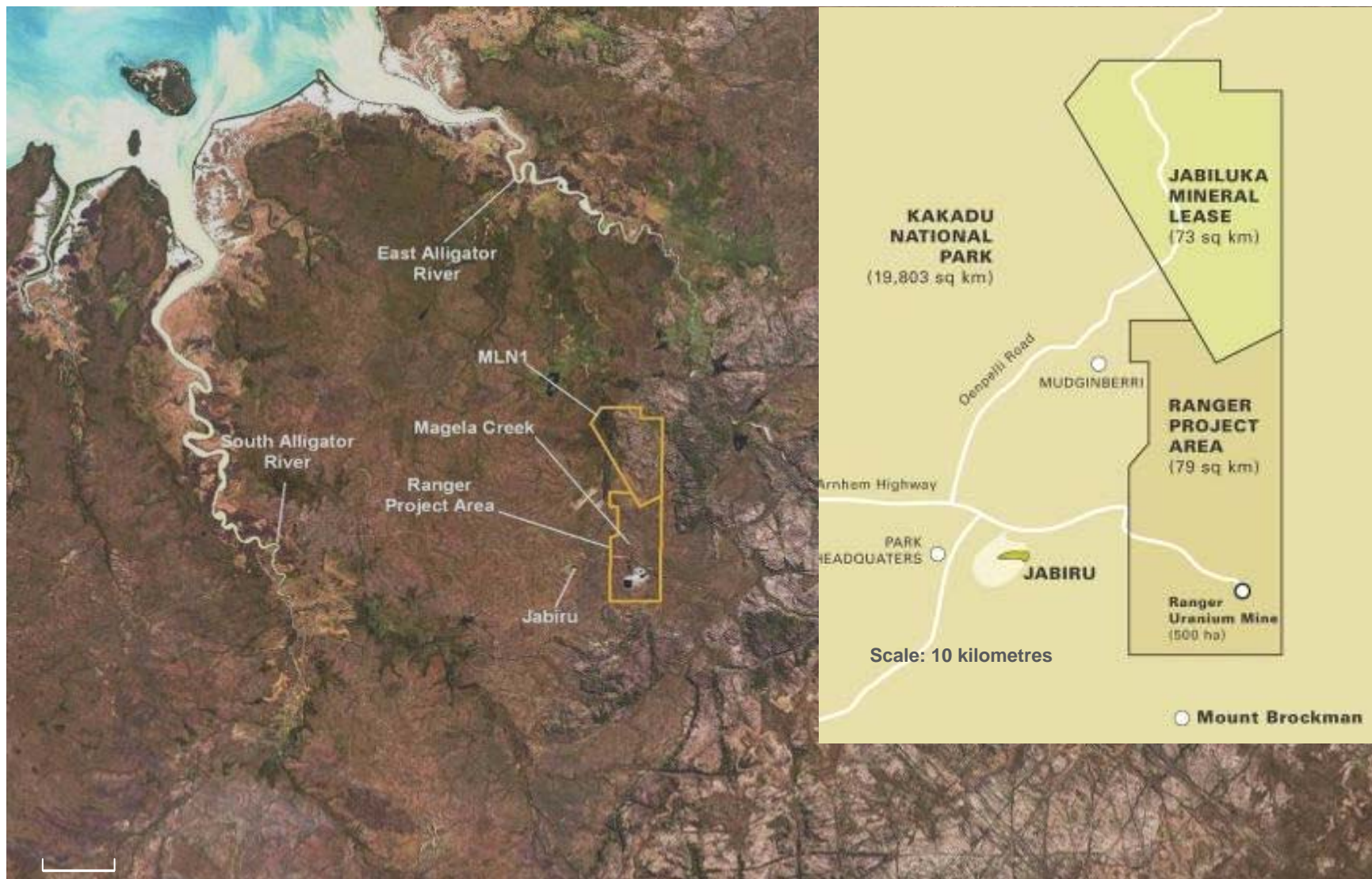


# Company overview

- Ranger mine generates 10 per cent of global uranium production and provides fuel for approximately one per cent of the world's electricity
- Three decades of uranium mining experience
- Produced 5,240 tonnes of uranium oxide in 2009
- To date production over 100,000 tonnes
- World class resources with significant expansion opportunities
- Indigenous employment has significantly increased and represents 18 per cent of workforce
- 68.4 per cent owned by Rio Tinto
- Ranger mine is arguably the most regulated and scrutinised mine in Australia
- Uranium oxide from Ranger is used solely to fuel nuclear power plants for the generation of electricity
- ERA makes a vital social and economic contribution locally, nationally and internationally



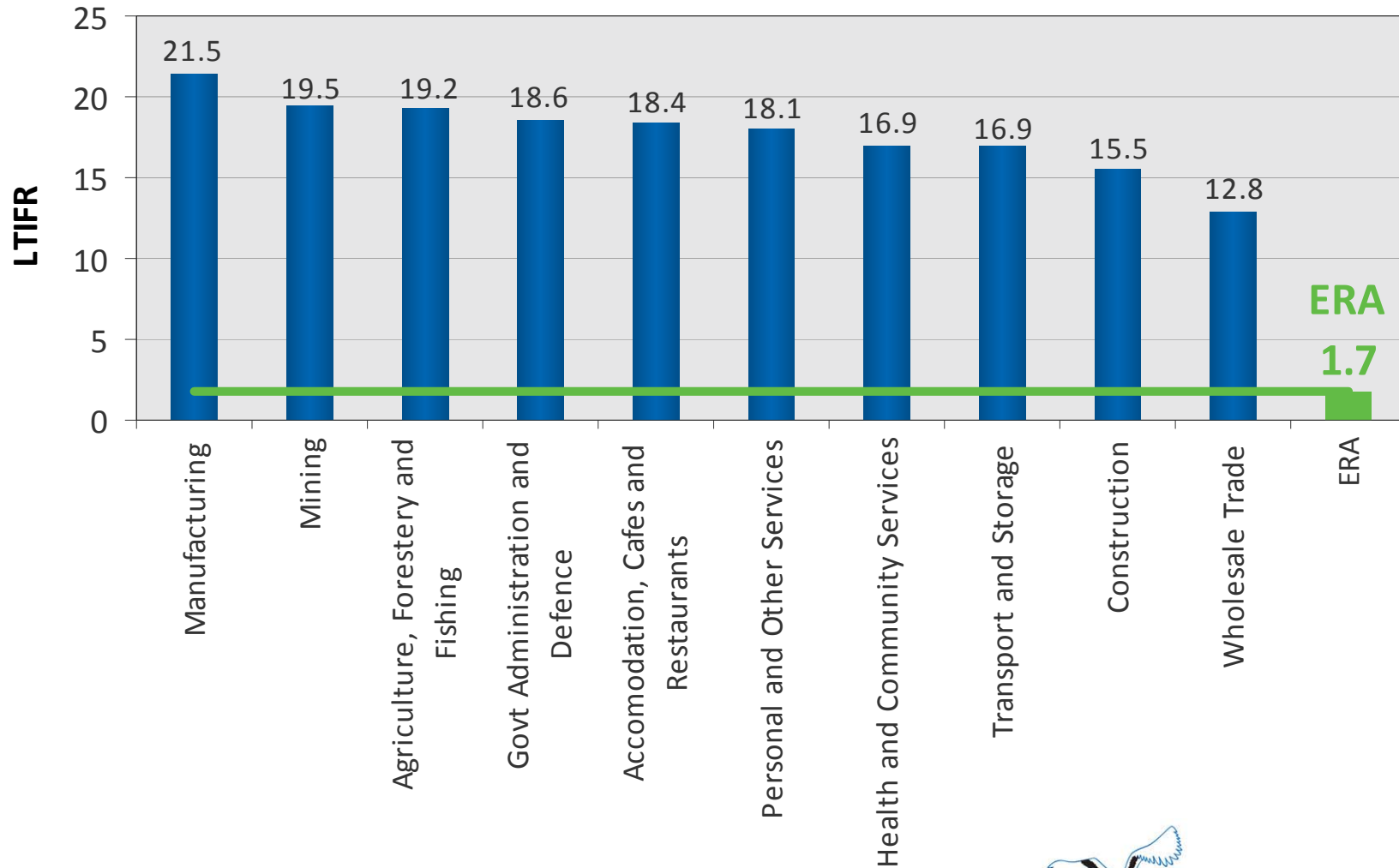
# ERA leases



# Safety

Other Industries LTIFR 2008-2009

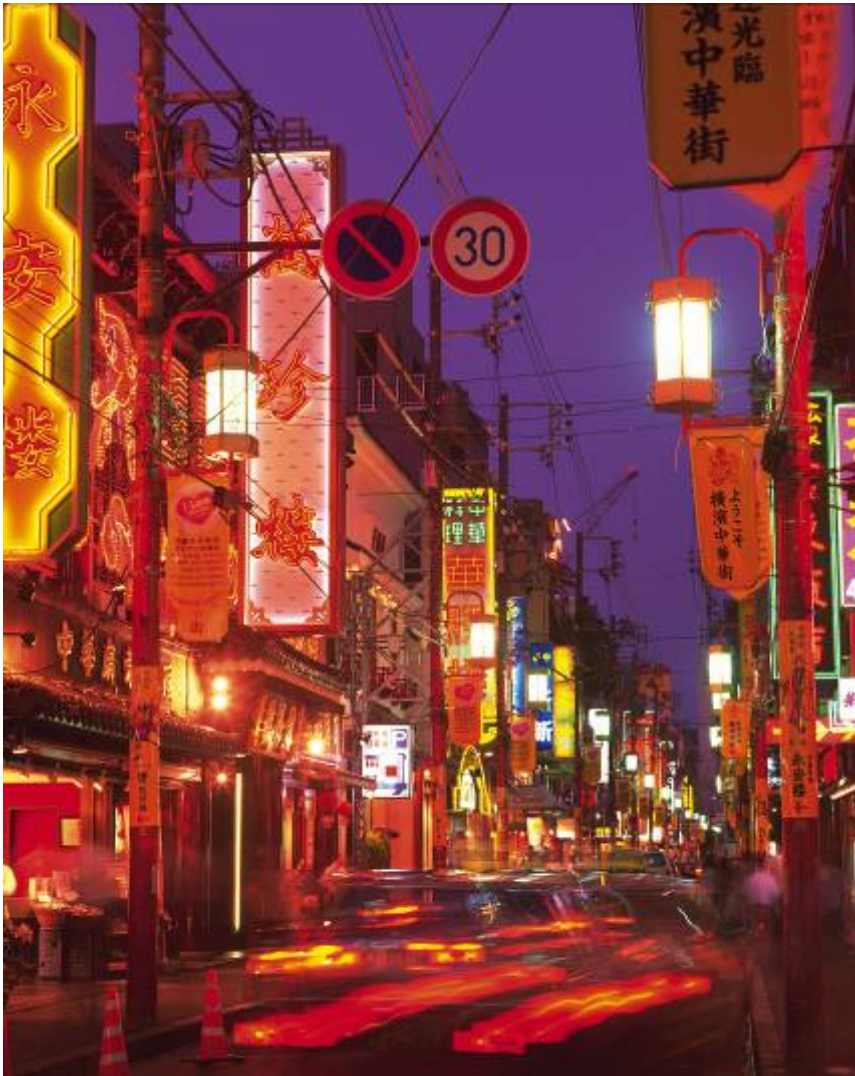
Lost time injury frequency rate (LTIFR) based on per 1,000,000 hours basis



\*Note: WorkCover NSW figures used for comparison purposes as NT WorkSafe does not keep LTIFR stats. ERA uses the Rio Tinto standard for calculating all injury and lost time injury rates, based on 200,000 hours. Industry calculations for LTIFR are based on 1,000,000 hours.  
Source: WorkCover NSW Statistical Bulletin 2008/2009.



# Energy solution – nuclear power

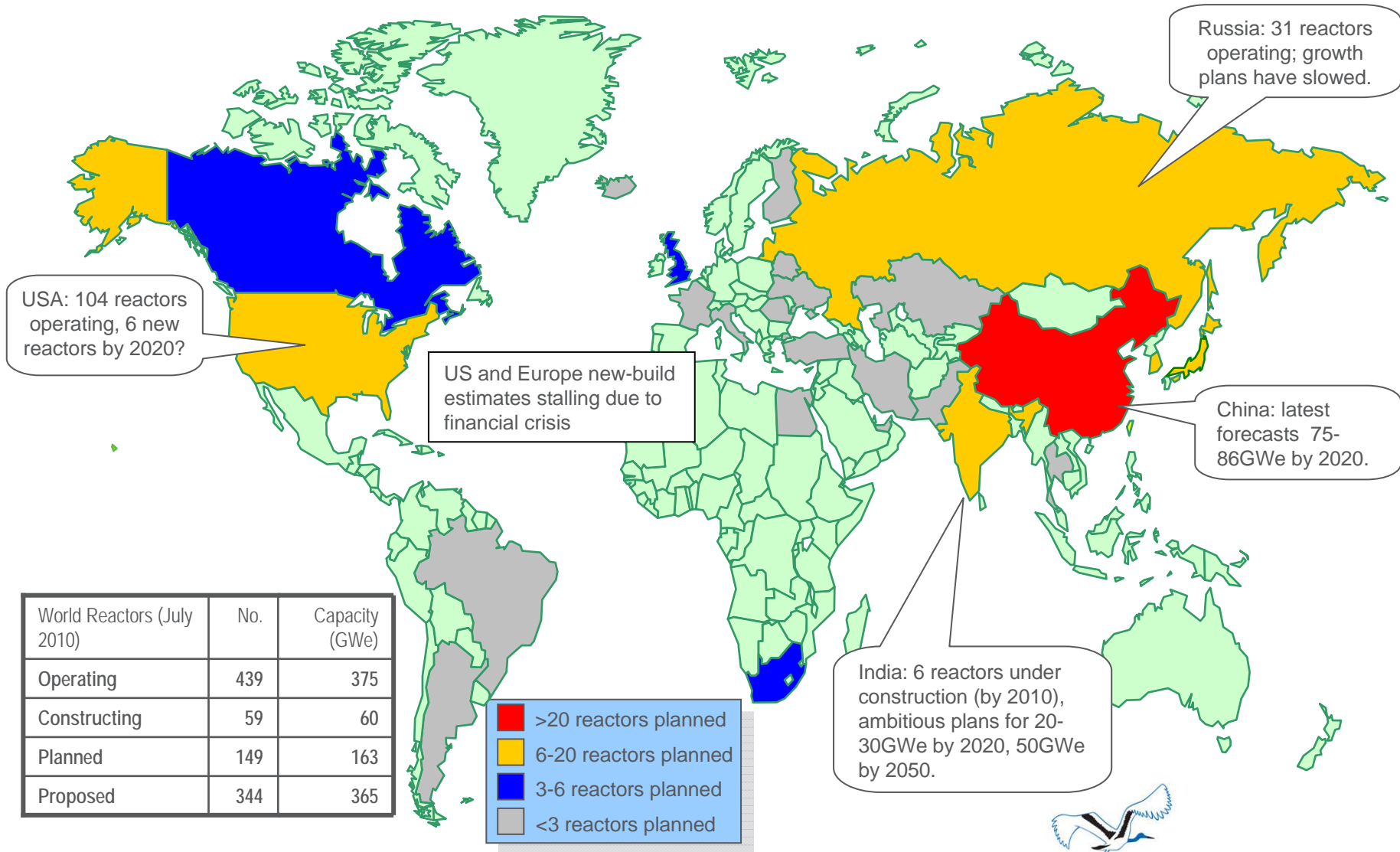


Yokohama, Japan

- ERA produces around 10 per cent of the world's mined uranium production
- ERA sells its product to power utilities in Asia, Europe and North America under strict international and Australian Government safeguards
- ERA provides fuel for approximately one per cent of the world's electricity
- The quantity of carbon dioxide avoided on an annual basis by using our product is equivalent to more than double all of the emissions from cars in Australia each year



# Nuclear reactors



WNA , July 2010 (change since May 2010 in brackets)



# Growth projects

Heap leach facility

Ranger 3 Deeps exploration decline

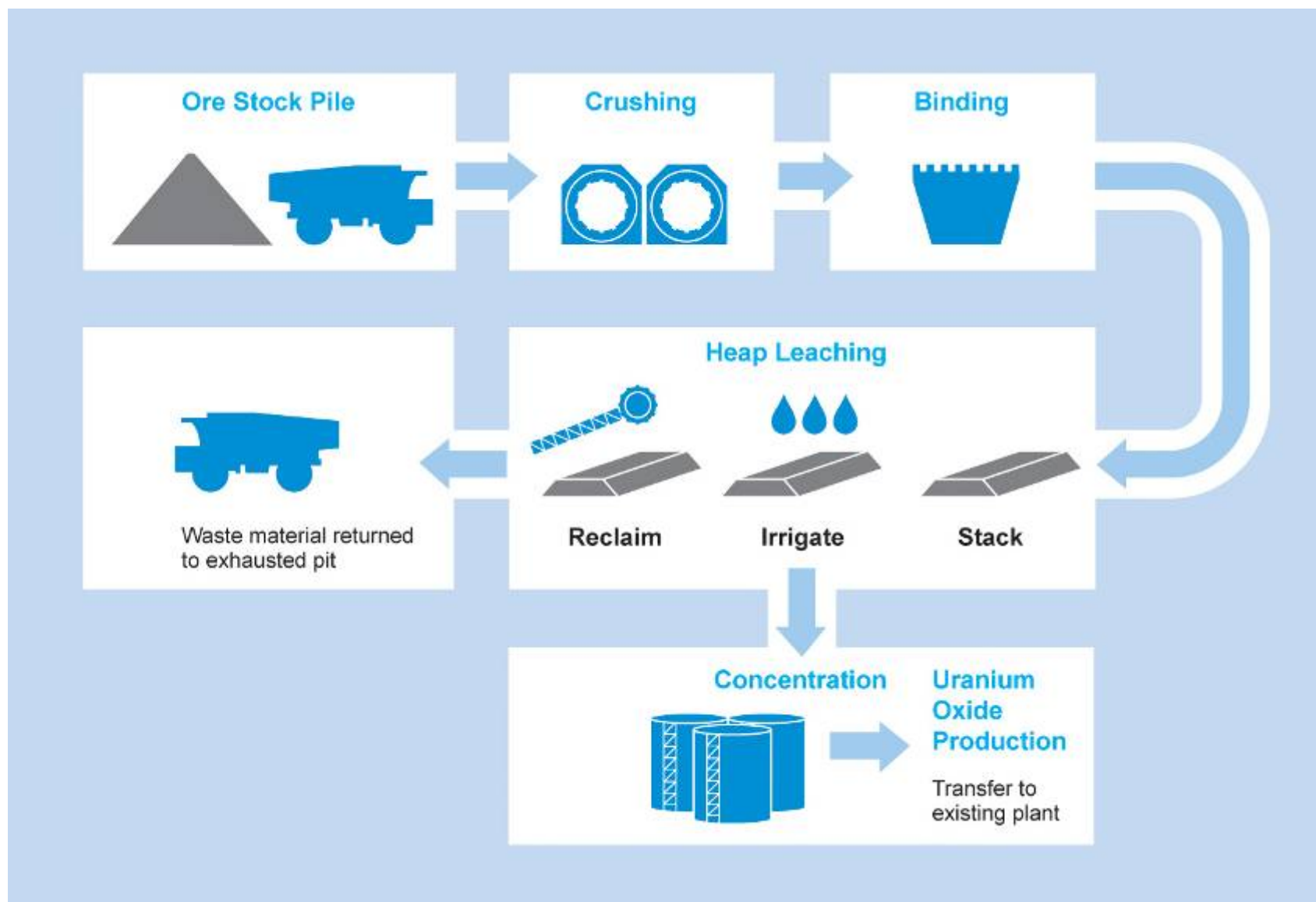
Jabiru East Accommodation Village



# Major projects - locations



# Heap leach facility diagram

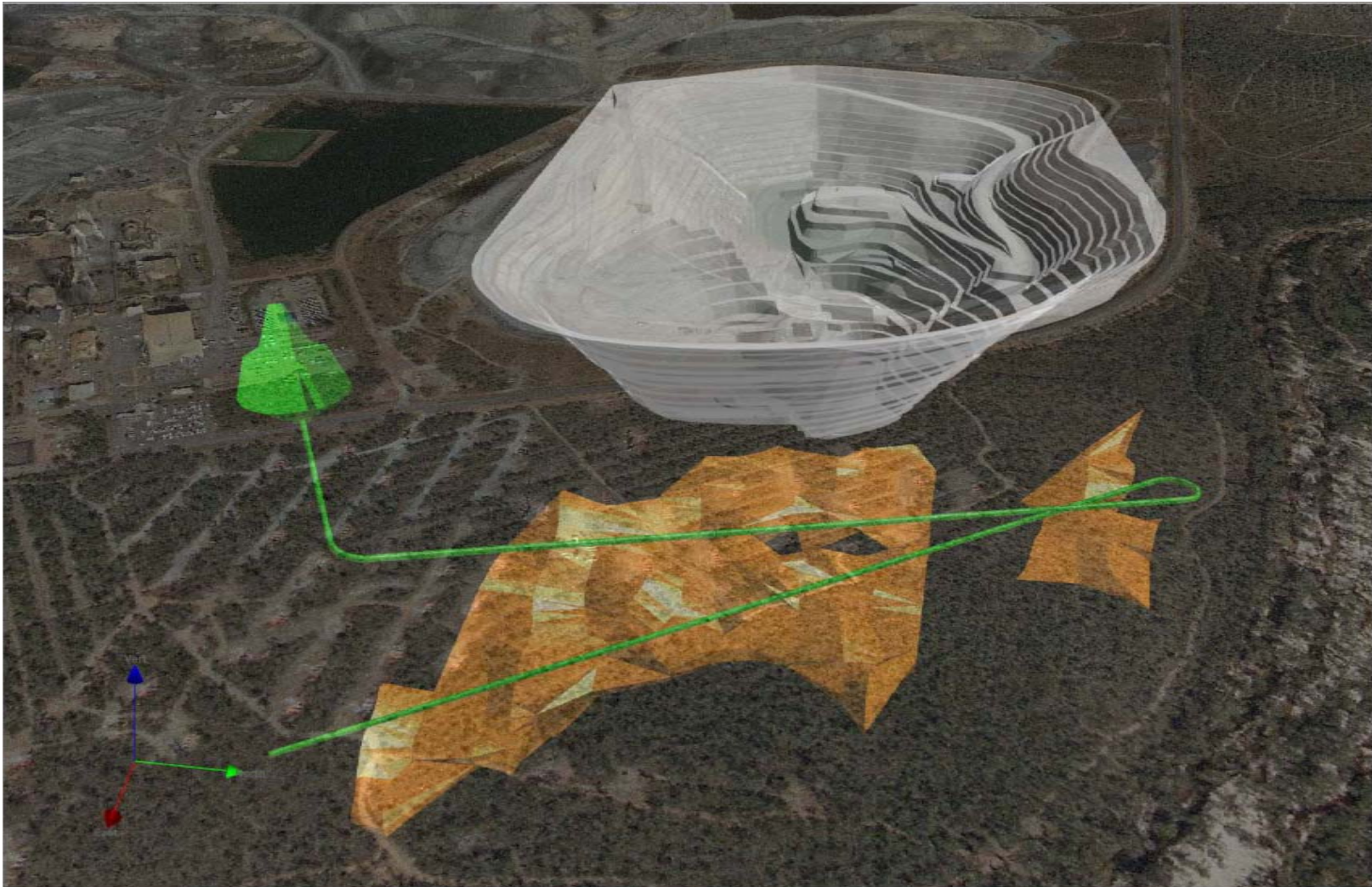


# Heap leach facility

- ERA Board approval given for feasibility study in October 2009 (\$36 million)
- The Environmental Impact Statement (EIS) guidelines from the Northern Territory and Commonwealth Governments have been issued and work is well underway to complete the EIS
- **Key dates:**
  - Completion of the feasibility study Q4 2010
  - Government Approvals H1 2011
  - ERA Board approval Pending FS
  - Project implementation 18-24 months
  - Project completion and first product 2013 depending on approvals
- Expected to deliver some 15 to 20 thousand tonnes of uranium oxide from lower grade resources
- Expecting employment levels to peak at over ~ 500 construction workers



# Ranger 3 Deeps



# Jabiru East Accommodation Village

- ERA is working towards the establishment of a dedicated accommodation village for ERA's fly-in-fly-out employees, contractors and temporary workers.
- The accommodation village is being planned to be constructed within the Ranger Project Area, adjacent to the Jabiru Airport.
- The village will house up to 750 people once complete but will be designed for optional expansion to 1000 if required.
- It will be constructed in stages, with the first stage to house approximately 500 people.



# ERA's economic impact to the Northern Territory

- Direct and indirect contribution of A\$400 million per annum to the Northern Territory economy. This represented 2.8 per cent of the total economy in 2008.
- During the last 10 years, ERA has reinvested 65 per cent of its net profits into projects at Ranger.
- **Other ERA contributions in 2009 include:**
  - \$42 million in royalty expenses
  - \$500,000 in partnership and sponsorships
  - \$70,000 contributed to Kakadu Health Services
  - Direct employment of 530 employees and approximately 1400 people indirectly
  - ERA has a workforce that is about 18 per cent Indigenous
- For a single mine, this is a very significant contribution and highlights the important economic role of this Company in the Northern Territory.

# Summary

- ERA has reliably supplied uranium oxide for 30 years
- ERA has ensured that the surrounding environment around the mine site has remained protected
- Ranger's lease areas contain world class ore bodies
- Nuclear energy is among those energy sources producing very low levels of carbon dioxide emissions
- Uranium market continues to look strong long term
- Several development opportunities
  - Heap leach facility
  - Ranger 3 Deeps exploration decline
  - Jabiru East Accommodation village
- ERA continues to be a very significant contributor to the NT economy

