



Ranger 3 Deeps overview



In November 2008, ERA announced a significant mineral exploration target defined as Ranger 3 Deeps.

ERA has been operating the Ranger mine for over three decades, since the commencement of open pit mining in May 1980, and the production of the first drum of uranium oxide (product) on 13 August 1981. Since then, Ranger mine has produced over 110,000 tonnes of product for use in overseas nuclear power stations. In November 2012 open pit mining concluded, whilst the plant continues to process stockpiled ore.

Ranger 3 Deeps exploration

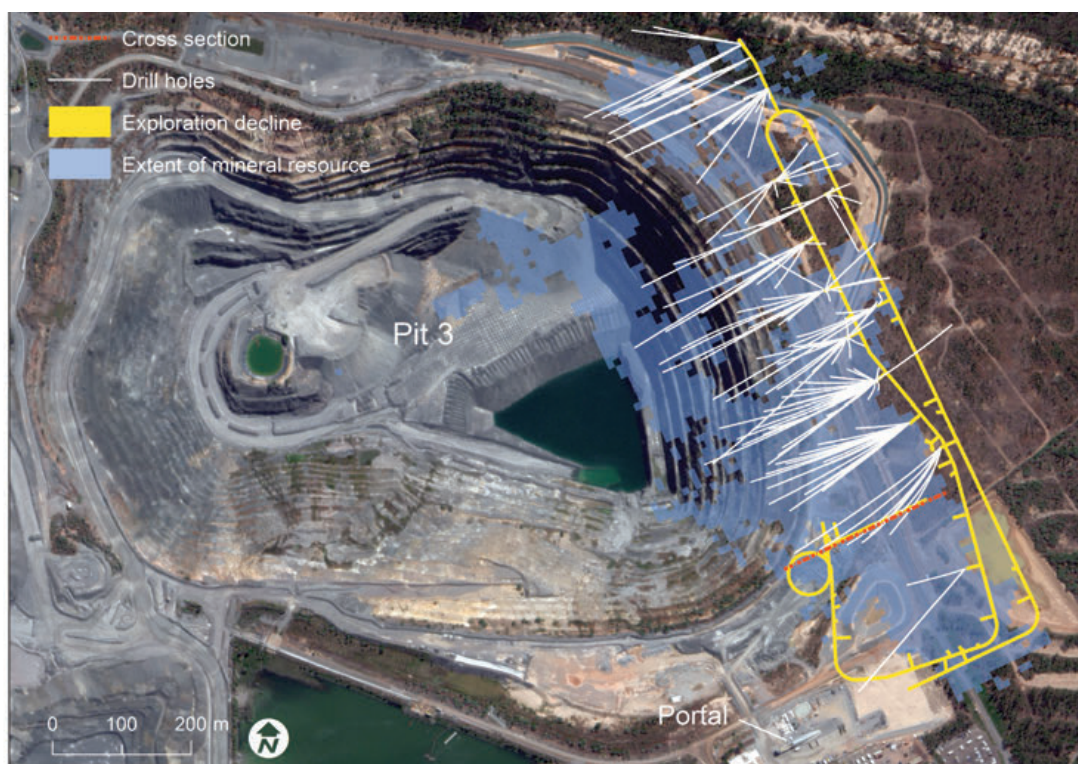
In November 2008, ERA announced a significant mineral exploration target defined as Ranger 3 Deeps. The identification of the Ranger 3 Deeps mineral resource, together with ERA's exploration achievements and innovations

were recognised by the 2009 award of Explorer of the Year by Australian Mining.

Following on from this announcement, ERA submitted a referral and notice of intent under the Commonwealth *Environment Protection and Biodiversity Conservation Act 1999* (EPBC Act) and Northern Territory *Environmental Assessment Act 1982*, respectively, for assessment of an exploration decline to further define the mineral target: *Ranger Uranium Mine Exploration Decline* (EPBC 2009/4860).

Both governments determined that this project did not require further environmental assessment and construction of the exploration decline commenced in May 2012 following consideration and approval of ERA's application to the stakeholder representative forum, the "Minesite Technical Committee".

This exploration program has enhanced the geological model and structural interpretation of the Ranger 3 Deeps resource, providing a basis for detailed mine planning, and provided environmental data to support impact studies.





ERA

Ranger 3 Deeps overview

Ranger 3 Deeps Underground Mine (the Project)

ERA is seeking the approval of the Australian and Northern Territory Governments to develop the existing Ranger 3 Deeps exploration decline into a fully operational underground mine. The Project presents a new mining approach, delivering high grade ore to the existing Ranger processing plant. The underground mine will have a very small surface footprint, predominantly within the existing Ranger mine operational area. The incremental product will be transported via existing routes and exported to Asia, Europe and North America for use in nuclear power facilities.

The Ranger Project Area is on Aboriginal land, surrounded by but separated from Kakadu National Park. While there are risks to the environment, these risks can be readily managed through application of ERA's well established and robust health, safety and environment management system, a range of design aspects and identified additional controls. The Project is anticipated to generate only small incremental impacts on the environment, generally in the immediately adjacent areas, through for example minor land clearing and ongoing operational noise. Studies have shown these impacts are expected to be negligible in respect to any significant or lasting impacts on the biophysical environment.

The Project does present some social risks, mostly associated with the impacts of existing operations. However it will add substantially to the regional economy, and presents opportunities to realise positive social benefits in areas such as employment, training, and local services and infrastructure. These benefits can also lead to improvements in establishing a long term, collaborative and sustainable future for the Jabiru township and wider regional community.

This Project will be constructed, operated and closed in accordance with ERA's focus on safety, sound environmental management practice and extensive monitoring programs. The very small residual impacts and low level of residual risks, verified through the comprehensive studies presented in this Draft EIS, demonstrate a strong environmental and social case to proceed.

The construction and operation of the Project will cover a period of approximately five years and will cease, according to Ranger mine's current operating approval, on 8 January 2021.

Fast Facts

- Construction of the exploration decline commenced in May 2012.
- The exploration drilling program has enhanced the geological model and structural interpretation of the Ranger 3 Deeps resource.
- The exploration program provides a basis for detailed mine planning and environmental data supporting the Draft EIS.
- The Project will be constructed, operated and closed in accordance with ERA's focus on safety, sound environmental management practice and extensive monitoring programs.

Further reading:

Refer to Chapter 1 of the *ERA Ranger 3 Deeps: Draft Environmental Impact Statement*.